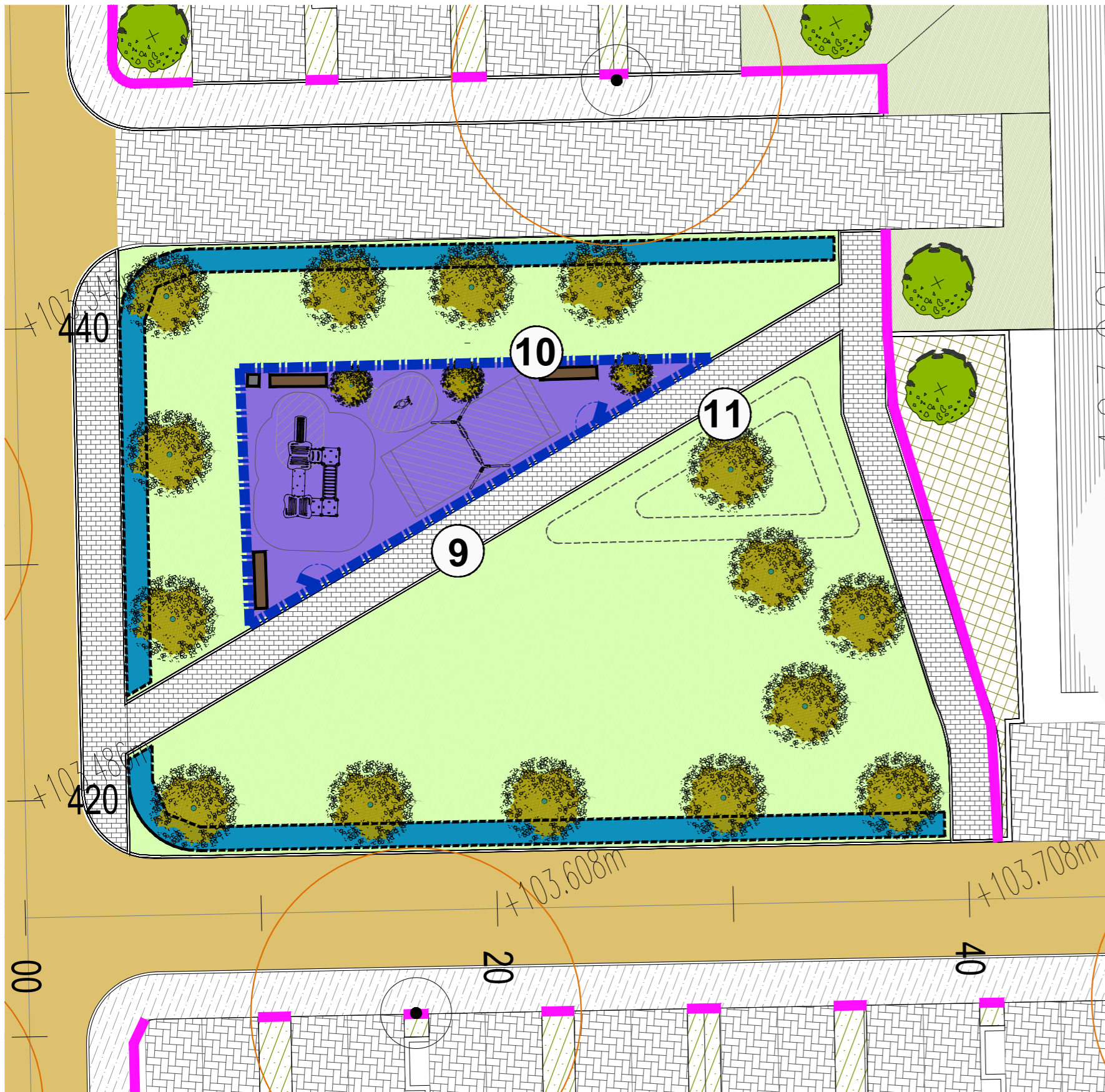




Play Area 1
Scale 1:200



Play Area 2
Scale 1:200



Play Area 3
Scale 1:200



Play Area 4
Scale 1:200



Play Area 5
Scale 1:200

North

Note

Legend

- Site Boundary
- Proposed Amenity grass areas with public ownership and to public open space: grass seed sown on 150mm clean topsoil (imported if necessary), over 250mm subsoil, all subsoil to be punctured and consolidated to aid natural drainage.
- Proposed shrub planting areas within public open space, positioned within 450mm clean topsoil (imported if necessary) to areas shown.
- Proposed open space tree planting - specimen species.
- Proposed Play area, with engineered resin bark mulch absorbent surface finish.
- Proposed Play area, with wet pour surface finish. Refer to dwg. PG-01-PP to PG-03-PP inclusive for reference details with regard to play elements.
- Proposed brushed concrete or bitmac surface surrounding dwellings and on footpaths through open space. Concrete pencil kerb to be applied to bitmac pathway links as necessary.
- Proposed feature paving to pedestrian areas shown, to Engineers details.
- Proposed 1200mm high bow top playground fencing, area to receive 2no. self closing gates; see D03 BD-01-PP for details.
- Proposed bitmac road surface to Engineers details.
- Proposed bench, see LD02 for details.
- Proposed Litter Bin, see LD02 for details.
- Potential Artwork Location.

Play Area 1 - Age Group 1-15

- 1 Kompan - Yard net Product No. KPL806 or similar and approved.
- 2 Kompan - Balance Product No.KPL804 or similar and approved.
- 3 Kompan - Roundabout Net Product No. KPL805 or similar and approved.
- 4 Kompan - Portal Swing with Birdsnet Rope Seat, Anthracite legs and connector, Product No. KSW92008 or similar and approved.
- 5 Kompan - Portal Swing with Standard seats & Cradle seats, Anthracite legs and connector, Product No. KSW92004, SW990025(Seat) or similar and approved.
- 6 Kompan - Stinger Product No. ELE400020 or similar and approved.
- 7 Kompan - BLOOX6 Product No: BLX410601 or similar and approved.
- 8 Kompan - Climber, Product No. M870 or similar and approved.

Play Area 2 - Age Group 1+

- 9 Kompan - 4 Tower with 2 Bridges, Aluminium poles & full steel Slide, Product No. KPL400502 or similar and approved.
- 10 Kompan - Speeder - Product No. ELE400019 or similar and approved.
- 11 Kompan - Portal Swing with Cradle seats, Anthracite legs and connector, Product No. KSW92004, SW990025(Seat) or similar and approved.

Play Area 3 - Age Group 1+

- 12 Paradiso Play Unit Kosmos; Product No. 54510305306; Supplied by Eibe play or similar and approved.
- 13 Paradiso Crawling Pipe; Product No. 54516605300; Supplied by Eibe play or similar and approved.
- 14 Ecorino Play Unit Kamet Solo; Product No. 51151501100 Supplied by Eibe play or similar and approved.
- 15 Paradiso Play Unit Climbing Tree Emma; Product No. 54503805306; Supplied by Eibe play or similar and approved.
- 16 Playo Tri Level Horizontal Bars Anton; Product No. 51103301100; Supplied by Eibe play or similar and approved.

Play Area 4 - Age Group 3+

- 17 Paradiso Play Unit Erin; Product No. 54527605300; Supplied by Eibe play or similar and approved.
- 18 Paradiso Play Unit Ronja; Product No. 54518405306; Supplied by Eibe play or similar and approved.

Play Area 5 - Age group 3+

- 19 Playo Play Unit Nora; Product No. 51105801100; Supplied by Eibe play or similar and approved.
- 20 Playo Climbing Unit Lhotse; Product No. 51106001100; Supplied by Eibe play or similar and approved.
- 21 Ecorino Play House Alpenrose; Product No. 51151401100; Supplied by Eibe play or similar and approved.

Rev:	Date:	Note:

Project name: Dunshaughlin East SHD	Project number: 17-003
Drawing name: Play Areas General Arrangements	Drawing number: PG-01-PP

Drawing scale @ A1: 1:500	Drawn by: ad	Checked by: ld
Status: Planning	date: 14.12.2018	

Contact details: Linda Doyle (Director) Tel: 016087782 e-mail linda@doyle-otroithigh.com Dawn O'Troithigh (Director) Tel: 016087782 e-mail dawn@doyle-otroithigh.com	Office address: Pembroke House, 28-32 Upper Pembroke St., Dublin 2.
--	--

doyle + o'troithigh
landscape - architecture

www.doyle-otroithigh.com